



POINT-OF-CARE

RT-PCR SOLUTIONS

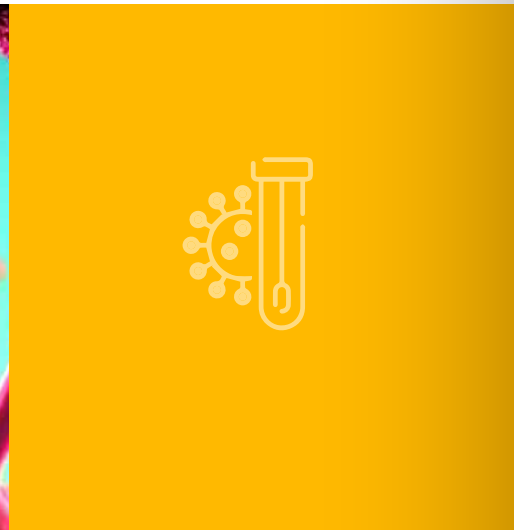
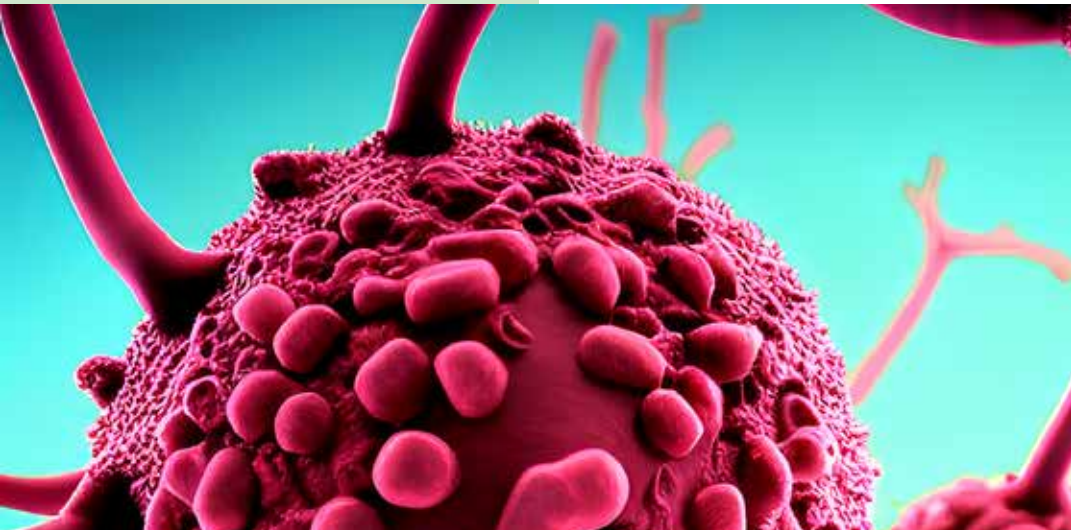


Revolutionary Point-of-Care Testing
Solutions for accurate disease detection





Novel, robust and cost-effective molecular and genetic diagnostic solutions.

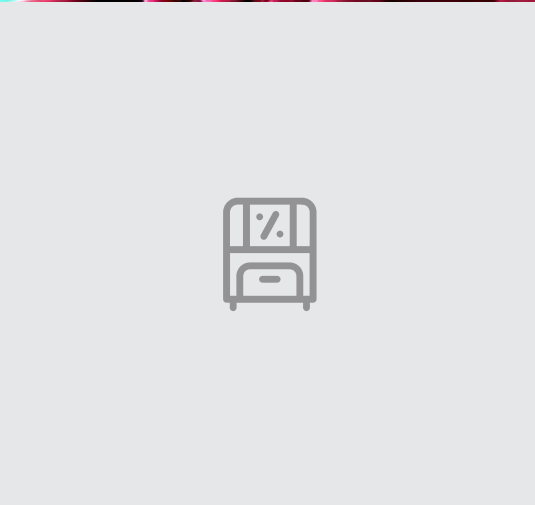


Pioneer manufacturer of cutting-edge, affordable and accessible IVD solutions around the world.

Since its inception, Genes2Me has been tirelessly working with a mission to deliver Next Generation Diagnostic solutions making Molecular testing more accessible, easier and cost effective for everyone in India as well as around the world. Our product portfolio is one of the most diverse and comprehensive one encompassing molecular point-of-care testing solutions, RT-PCR detection kits, Nucleic Acid Extraction kits and Next Generation Sequencing clinical panels for a range of infectious and non-infectious diseases.

We have demonstrated phenomenal success by delivering revolutionary and path-breaking solutions for Beta Thalassemia, Sickle Cell Anaemia, Liquid Biopsy, Oncology, Rare Genetic Disorders, TB, HPV, Pharmacogenomics, COVID-19, etc.

To continue the legacy, we are determined to innovative reproducible and precision-oriented disease detection solutions to address the emerging health needs.



Spearheading Innovation in IVD Solutions Manufacturing

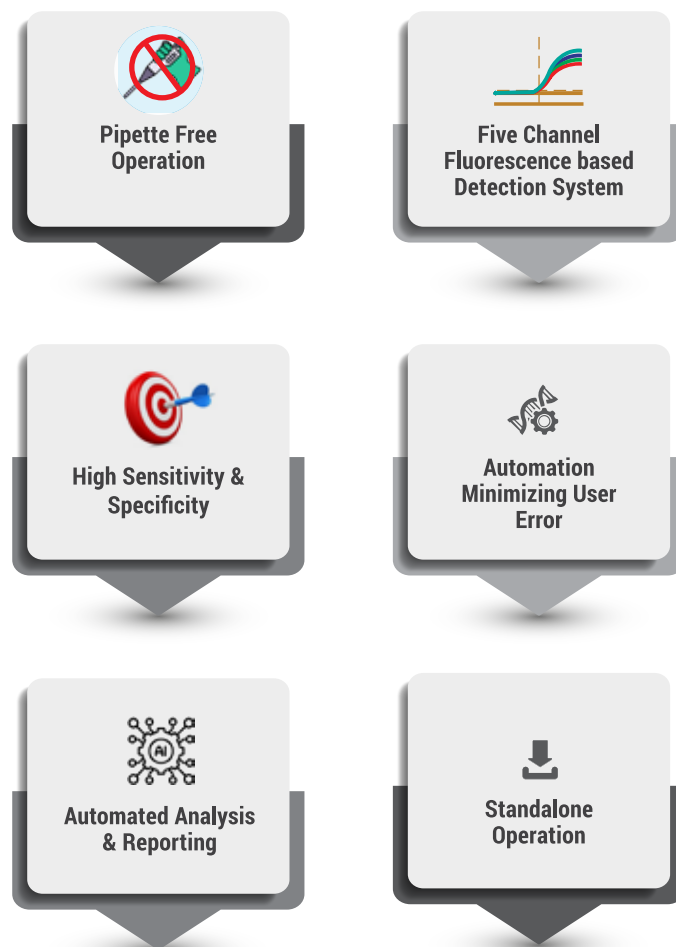


Lifesciences

Labs



KEY FEATURES



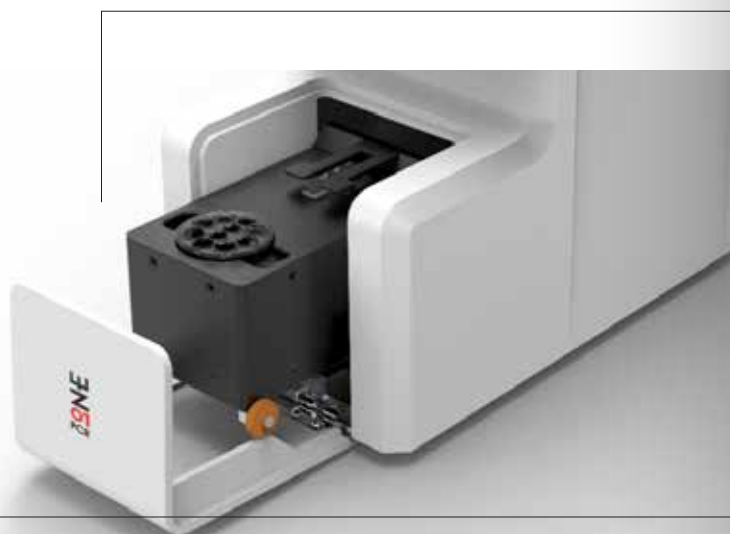
Highly sensitive Absolute Solution that offers high quality reliable detection using automated nucleic acid extraction followed by RT-PCR detection in single assay with an innovative extraction cassette and PCR reaction cartridge.

One device that Integrates Nucleic Acid Extraction, PCR Amplification and Fluorescence Detection in the same run

Highly Compact Solution for Single Sample detection

Flexible to Multiple parallel detection using multiple devices.

- **Fully automated nucleic acid amplification** for faster detection
- **Convenient-to-use** simple & compact design
- **Built-in HEPA filters & UV light** sterilization for efficient results
- **Fast speed**; Completes One run in ~60 minutes
- **Small volume requirements** for whole experimental process from sample input to result output
- **Minimal manual intervention**; Direct sample to fluorescence detection
- **Pre-filled cartridge** for extracton and amplification without the manual liquid transfer to save time and manpower



ZONE PCR

Fully Automated Detection System

SAMPLE IN → RESULT OUT

1 Sample upto 20 Targets



- AUTOMATIC**
- INTEGRATED**
- ACCURATE**
- BIO-SAFETY**

Special Function Module



Detachable RT-PCR tubes to integrate with the extraction cassette. Can accommodate upto 4 tubes for the detection of upto 20 targets.



Circular Nucleic acid extraction cassette





Point-of-Care RT-PCR SYSTEM



For testing of 1-8 samples simultaneously



Compatible with 50+ detection assays



Light weight & Compact (1.4 Kg)

Can be operated with Car battery/Lithium battery

KEY FEATURES

Four channel- Eight well Block Design

Capable of working with **Car Battery/ Lithium Battery**- especially suitable for quick field inspections

Direct connectivity with Portable handheld devices

Constant Current Circuit, High Temperature control Accuracy

Powerful Software Analysis Function- can perform quantitative analysis, melting curve analysis, etc.

Adopting Side Scan Technology- the detection distance is short and the fluorescence collection signal is stable

Protection Functions- Over current, Over-temperature, power-off data self-recovery, etc.

Environment Friendly- Holds advantage of energy saving, environmental protection & long service life.

Standalone Operation with Direct Connectivity to Printer, Barcode Scanner & LIS



Thermal Printer



BLUETOOTH



WiFi



Barcode Reader



Built-in display & automated result analysis



**POC RAPID
RT-PCR SYSTEM**

RAPI-Q SPECIFICATIONS

Sample Capacity	8 rxn
Consumable	Special ultra thin G2M rxn vessel
Reaction Volume	10-100µl
Temperature Range	0-100°C (Resolution:0.1°C)
MAX. Ramp Rate	6°C/s
Temperature Range	4-100°C
Uniformity, Accuracy	±0.15°C, ±0.1°C
Hot Lid Temperature	30-110°C (Adjustable, default 105°C)
Excitation wavelength	460-628nm
Emission wavelength	F1: 520-540nm, F2: 540-580nm, F3: 571-612nm, F4: 628-692nm
Factory Calibrated Dyes	F1: FAM/SYBR Green I, F2: HEX/VIC/JOE/TET, F3: ROX, F4: CY5
Light Source	4 pcs highly efficient LED
Detection	High sensitivity photoelectric detector
Dynamic Range	1-10 ¹⁰ Copies
Sensitivity	1 copy
Date Export Formats	Report can be printed (optional USB thermal printer)
Printing	excel, cvs, txt
Dimension, Net Weight	180(L)×150(W)×90(H), 1.4 KG
Power	15 V DC, 90W or compatible with battery backup

Commercial Name

Cat No.

Rapi-Q Real Time PCR System

IG2M5001

Pictorial representation of result interpretation of assays on POC devices

Well	Dye	Name	Targets	Type	Std.con	Copy No.	Ct	Result	Result-2	Final
A10	FAM	Sample 1	166110	LINE			15.09	Positive	Positive	Positive
	HEX		166110				30.82	Negative	Positive	
	CY5		166110				15.70	Positive	Positive	Positive
A11	FAM	Sample 2	166110	LINE			23.83	Positive	Positive	Positive
	HEX		166110				17.27	Negative	Positive	Positive
	CY5		166110				27.34	Positive	Positive	Positive
A12	FAM	NTC	166110	LINE			31.82	Negative	Negative	Negative
	HEX		166110							
	CY5		166110							
A13	FAM		166110	LINE				Invalid	Invalid	Invalid
	HEX		166110							
	CY5		166110							
A14	FAM		166110	LINE				Invalid	Invalid	Invalid
	HEX		166110							
	CY5		166110							

Revolutionary Point of Care Testing Solution which does not require any special lab environment or additional equipment

- Highly Accurate Fluorescent probes based detection method which supports One-step PCR Method for different applications
- Delivers Result Interpretation as Positive/ Negative along with Ct values



4 Channels & dual block
16-Well Design,
can run two different
programs independently



- 7 inch high definition touch screen and embedded Win10 Operating System
- Unique hot lid lock design
- One touch to open the lid
- Power Failure, Fault Protection and Alarm Function
- Factory Calibrated Dyes: F1: FAM, F2: HEX, F3: ROX, F4: CY5

- Preset Program settings for multiple RT-PCR assays and fluorescent detection
- Data Analysis Function: Qualitative, Quantitative, Melting curve analysis
- Data Export Formats: excel, csv, txt
- Software Upgradation (remotely)
- Individual sample report
- Complete batch report

KEY FEATURES

From Direct Samples to Results in 30-45 Minutes	Pipette Free Operation Eliminating the need of Technically Skilled Person	High Sensitivity (99%), Specificity and Accuracy in results
Four Targets Analysis Allowing detection of multiple genes/ infections simultaneously	Lyophilized Format Making the kit stable at Room Temperature for upto 12 months	AI Driven Solution Automated analysis, Interpretation & Reporting
Extensively Validated on wide variety of Clinical Samples	Parallel detection of Target with Endogenous Internal Control	Ideal for Testing at Public Places with confined space

RAPI-Q HT SPECIFICATIONS

Size	300(L)x267(W)x198(H) mm	Transportation & Storage Temperature	-20~55°C
Weight	11KG	Sample Capacity	32
Voltage & Power	Input - 220 Volt-50Hz, Output - DC30V-20A, 600W	Applicable consumables	Dedicated Consumables
Communication Interface	USB 2.0	Temperature Range	4~100°C
Operating Environment Temperature	18~35°C	Temperature Accuracy	± 0.25°C
Sensitivity	1 Copy	Maximum Ramp Rate	8°C/s
Instrument Noise Level	<65dB	System Startup time	<30 seconds
Excitation	Long Life LED	Excitation Wavelength:	F1: 470nm, F2: 523nm, F3: 571nm, F4: 628nm
Detection	High sensitivity photoelectric Detector	Emission Wavelength	F1: 525nm, F2: 571nm, F3: 612nm, F4: 692nm

Standalone Operation
with Direct Connectivity
to Printer, Barcode
Scanner & LIS



Thermal Printer



BLUETOOTH

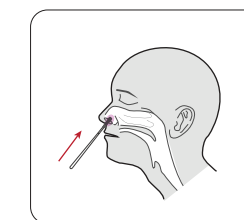


WiFi

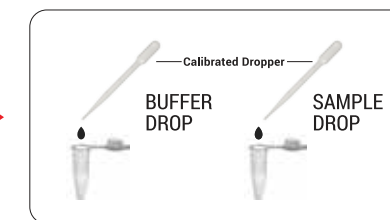


Barcode Reader

EASY STEPS TO RESULT



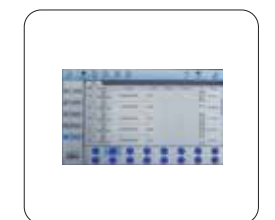
Sample Collection
(Oropharyngeal/
nasopharyngeal swab)



Reaction Set-up



Instrument Run



Automated Report

RAPi-X16

Fast & Automated Nucleic Acid Extraction System

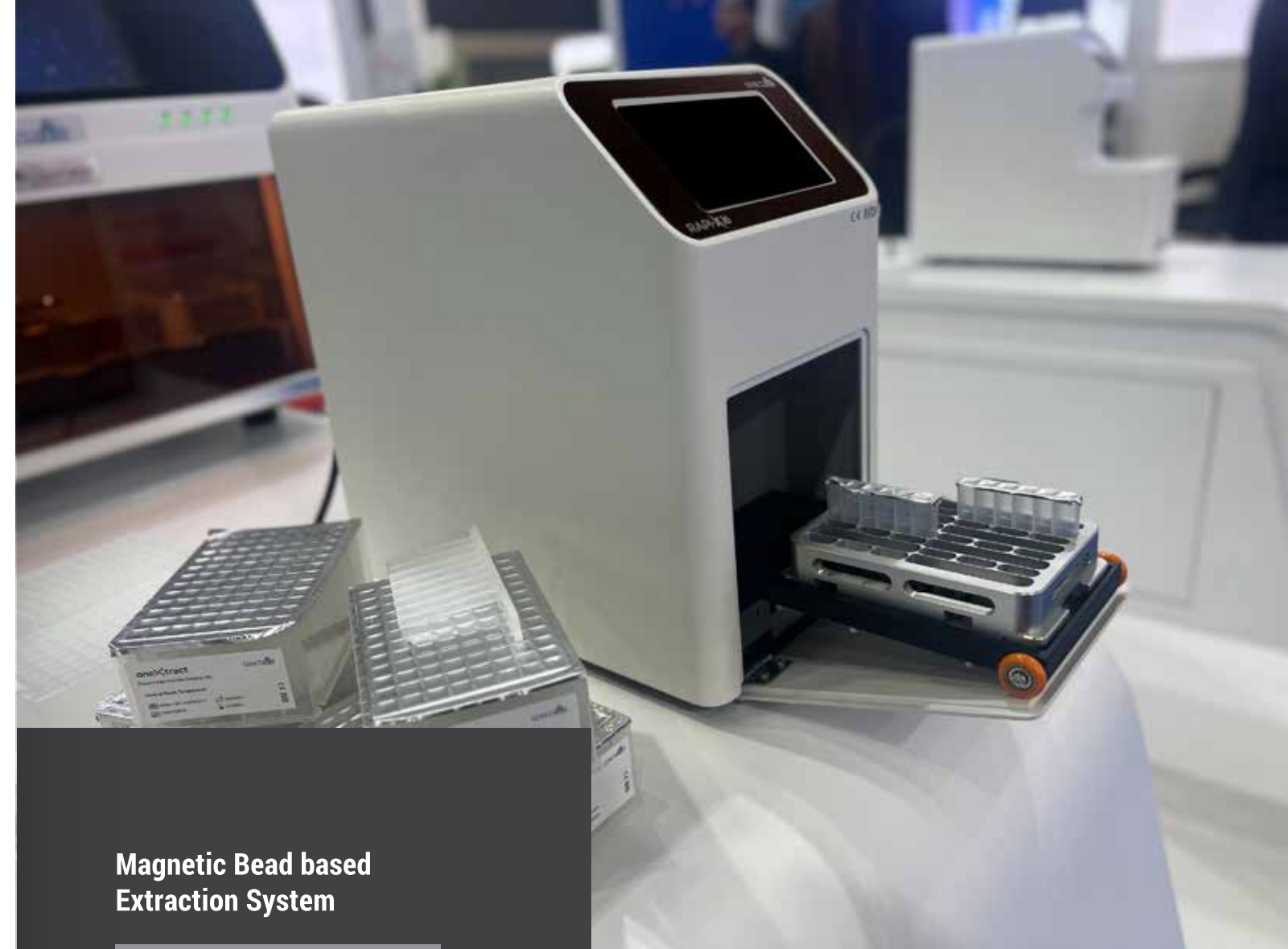
KEY FEATURES

Complete range of kit reagents for faster & efficient extraction and purification of DNA, RNA and Total nucleic acids	Temperature uniformity & accurate controls
User friendly Interphase for real time display of running programs	HEPA filter and UV Light for decontamination
High Recovery Rate of Magnetic Beads >98%	Suitable for Extraction & Purification of various clinical samples
Powerful application to efficiently meet different reagent requirements	

Genes2Me Rapi-X16 nucleic acid extraction system ensures homogeneous suspension and distribution of magnetic beads, leading to higher DNA/ RNA yields.



Commercial Name	Cat No.
Rapi-X16 Automated Nucleic Acid Extraction System	G2MI80002



Magnetic Bead based Extraction System

Faster End Products with Short Processing Time

Easy to Use, Stand-alone independent operation

Pre-filled Ready to use reagents for multiple sample types

- Sample Types: Blood, Plasma, Serum, Nasopharyngeal & Oropharyngeal Swabs, Vaginal & Cervical swabs, Saliva, Sputum, Urine, Fresh tissue and other body fluids
- Can process 1-8/ 16 samples per run
- Extraction time ~ 15 minutes
- Working volume: 10-100ul
- Sample Elution volume: 50-100ul





O1XRT

One for all **Nucleic Acid Extraction Kit**

Genes2Me "One for All" total Nucleic Acid Extraction solution is an automation friendly kit that enables processing of varied clinical samples for isolation of pure & intact nucleic acids.

- One Unique Solution for total Nucleic Acid Extraction
- Ready to use Prefilled Plate Format
- Room Temperature Optimized Protocols
- High Quality Purified Nucleic Acid (DNA/ RNA) suitable for downstream applications
- Flexible to Multiple Samples Types
- Processing Time ~15 minutes

Sample Types



- Whole Blood
- Saliva
- Nasopharyngeal/ Oropharyngeal Swabs
- Vaginal & Cervical swabs
- Plasma/ Serum
- Urine
- Fresh Tissue
- Other Body Fluids

Magnetic bead based extraction

Easy and automated workflow

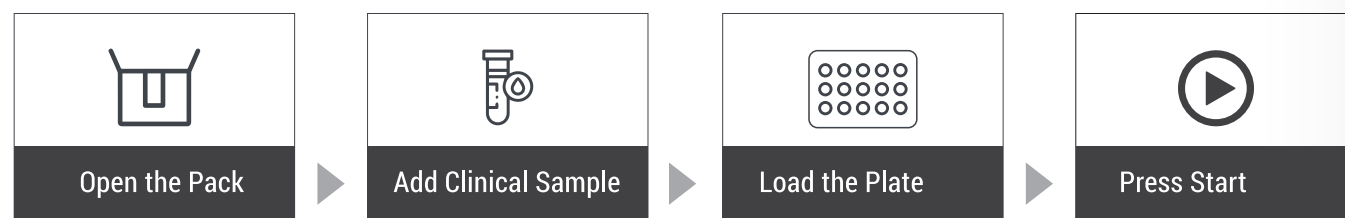
Universal solution for different sample types

Available in different pack sizes

One stop solution for detection of infectious diseases & oncology assays

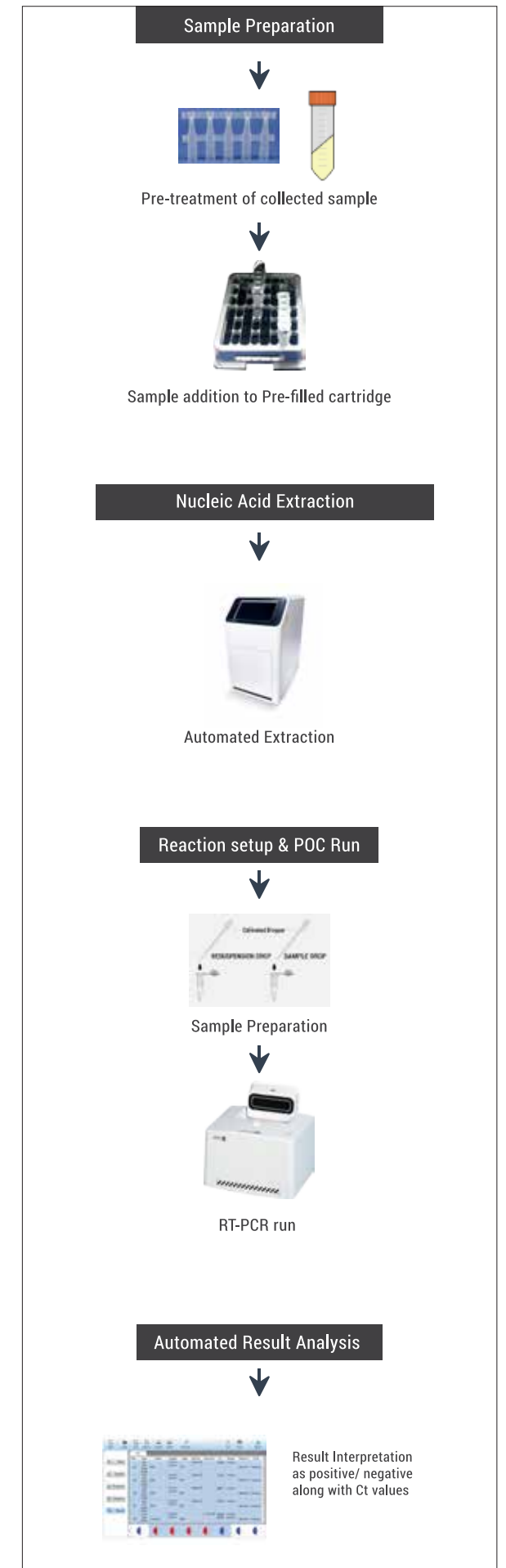
MTB, HPV, HBV, HCV, HIV, STIs BCR-ABL, PML-RARA JAK2 etc.

Easy to Process Steps



Cat No.	Pack Size
G2M211921-NAE(PF) MagNXT Tissue & Body Fluids (<i>OneXtract</i>)	96/192/480 Preps

- Lyophilised kit reagents
- Easy-to-use kit
- Accurate, sensitive & fast results



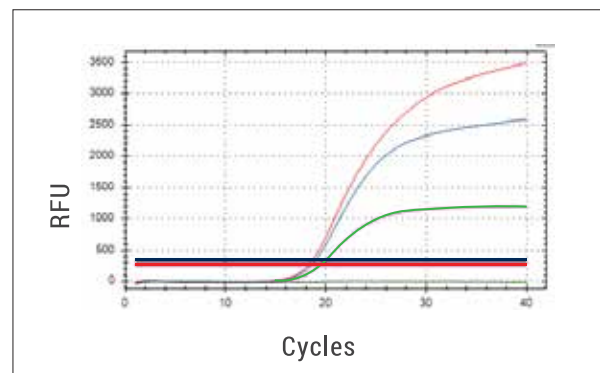
HPV Detection Solutions

Human papillomavirus infection (HPV infection) is caused by a DNA virus from the Papillomaviridae family leading to major health problems, including genital warts and cancers.

Sample Source
Vaginal/
Cervical Swab

HPV-Q Real Time PCR Kit

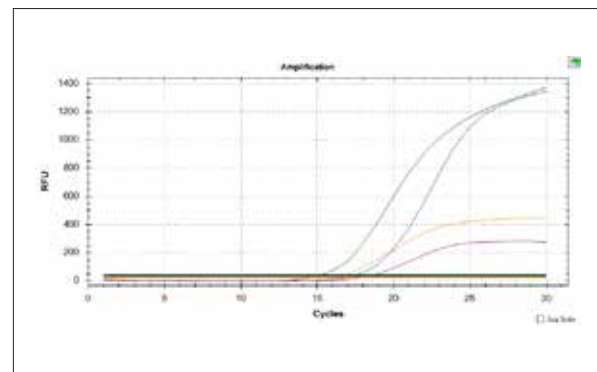
- Allows differential identification of 14 High- risk HPV genotypes: HPV 16, 18, 31, 33, 35, 39, 45, 51, 52, 56, 58, 59, 66, 68
- Differential detection:
 - HPV 16
 - HPV 18
 - Rest of HPV genotypes
 - Endogenous control



Amplification patterns obtained with the multiplex assay on plasmid DNA (10^5 copies of plasmid/ μ L). The curves were generated by amplification of target specific positive control DNA of pooled plasmids for HPV16, HPV18 and other 12 HR- HPV genotypes.

HPV-Q Comprehensive Real Time PCR Kit (28 Genotypes)

- Comprehensive Real Time PCR in vitro diagnostic test for the detection of 28 HPV genotype including high risk HPV and low risk HPV genotypes in DNA extracted from clinical samples
- Differential identification of HPV16 and HPV18 genotype
- Qualitative detection of
 - 12 High Risk genotypes including HPV 31, 33, 35, 39, 45, 51, 52, 56, 58, 59, 66, 68
 - 14 Medium-Low risk genotypes including HPV 6, 11, 83, 54, 26, 81, 61, 44, 40, 43, 42, 82, 53, 73



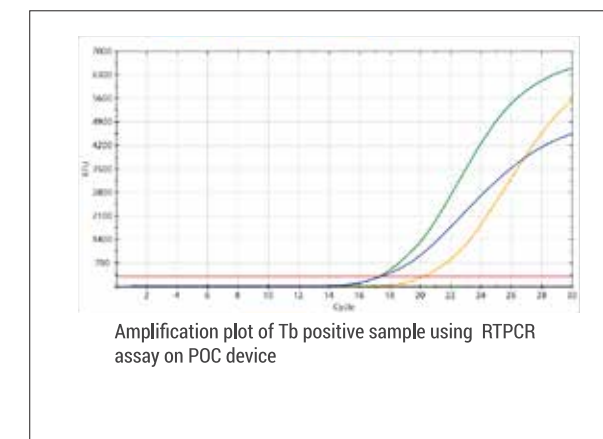
TB Detection Solutions

Complete testing solution for Tuberculosis

TBdtect

MTC-Q Real Time PCR Kit

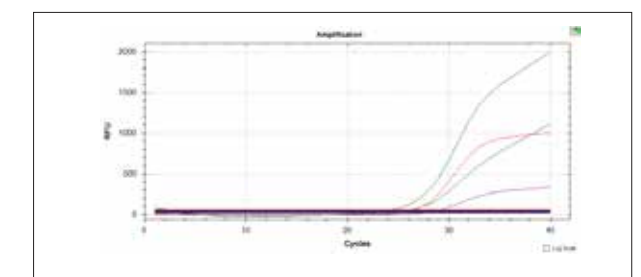
- Detection of Mycobacterium tuberculosis infection in clinical samples
- Targets Covered: IS6110, MPT64 genes



TBfind

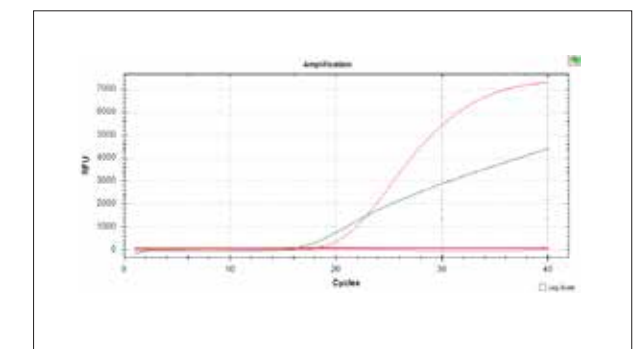
TB-Q Comprehensive Real Time PCR Kit

- Allows Simultaneous detection of MTB & MDRTB (Multidrug-resistant tuberculosis)
- Targets Covered: MPT64, rpoB, katG, inhA genes
- 16 mutations covered for two first line drugs ie. isoniazid (INH) & rifampicin (RIF) resistant/sensitive tuberculosis



MTB-NTM Multiplex Real Time PCR Kit

- Detects Non-tuberculosis mycobacterium infections causing lung diseases/ non causative agents of TB.
- Targets Covered: multiple NTM genotypes including M. abscessus; M. avium; M. fortuitum; M. kansasii; M. intracellulare; M. massiliense; M. chimaera
- Accurate Detection and Differentiation of tuberculosis with NTM
- Targets Covered: NTM specific - HSP65 gene
MTB specific - MPT64 gene



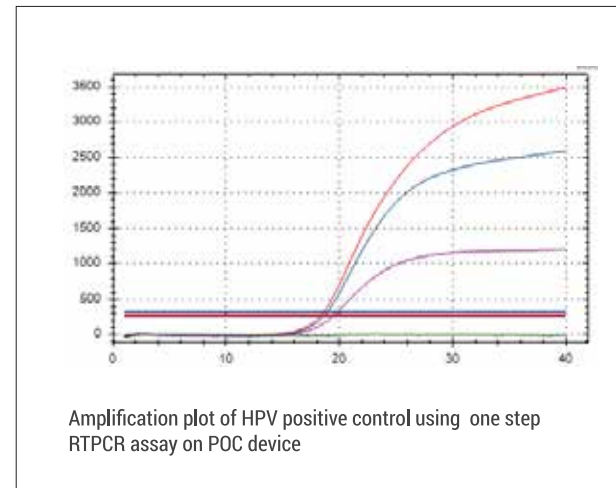
3H(HIV, HCV, HBV) Detection Solutions

Multiplex qualitative assay for simultaneous detection of Hepatitis C virus, Hepatitis B virus & Human Immunodeficiency virus in clinical samples

3Hdect - Q

Multiplex Real Time PCR Kit

Individual target specific primers and probes have been designed for multiple virus detection in a single reaction through separate fluorescent channels



One step RTPCR kit with ready to use reagents specific for multiple targets based on Taqman chemistry.

Gene targets covered:

- HCV specific: Poly gene
- HBV specific: CR gene
- HIV specific: pol, gag genes

One tube assay for differentiation & identification of HCV, HBV & HIV



Sample Source
Serum/ plasma



High Sensitivity and Specificity



Quick Turn Around Time

STI Detection Solutions

STI-Q Comprehensive Real Time PCR Kit is a multiplexed real-time PCR kit for the detection of major Sexually Transmitted Infections (STIs) causative pathogens from clinical samples.



STI-Q Comprehensive Real Time PCR Kit

Comprehensive Multiplex Real Time PCR Kit

Aims to qualitatively detects & differentiates causative organisms for Sexually Transmitted Infections in clinical samples along with parallel detection of Internal control

Pathogens Covered

- Mycoplasma genitalium
- Mycoplasma hominis
- Neisseria gonorrhoeae
- Trichomonas vaginalis
- Ureaplasma parvum
- Ureaplasma urealyticum
- Herpes Simplex Virus -1
- Herpes Simplex Virus -2
- Treponema pallidum (Syphilis)
- Candida albicans
- Toxoplasma gondii
- Haemophilus ducreyi
- Chlamydia trachomatis*

STI7-Q Real Time PCR Kit

Multiplex Real Time PCR Kit

Qualitative detection & differentiation of seven major sexually transmitted infections (STIs) causative pathogens in clinical samples along with parallel detection of Internal control

Pathogens Covered

- Mycoplasma genitalium
- Mycoplasma hominis
- Neisseria gonorrhoeae
- Trichomonas vaginalis
- Ureaplasma parvum
- Ureaplasma urealyticum
- Herpes Simplex Virus-1
- Herpes Simplex Virus-2
- Chlamydia trachomatis*

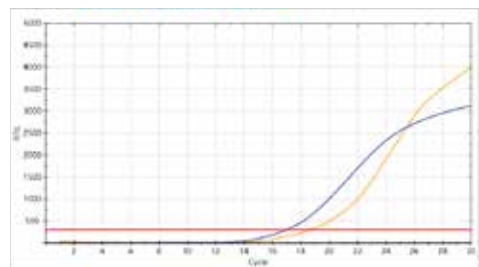
Oncology Detection Solutions

BCR-ABL-Q Real Time PCR Kit

BCR-ABL-Q Real Time PCR Kit is a detection of BCR-ABL breakpoint gene fusion transcripts in total RNA isolate from clinical samples i.e. bone marrow & peripheral blood samples.

Breakpoint Gene Fusion Transcripts

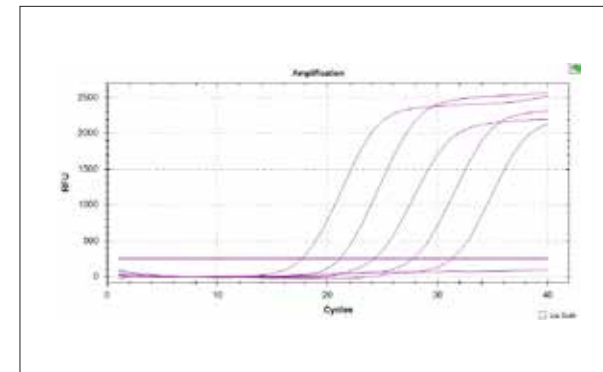
- Major-BCR [M-p210-[e14a2 & e13a2]]
- Minor-BCR (M-p190-[e1a2])
- Micro-BCR (M-p230-[e19a2])
- BCR-ABL Fusion Gene [chromosome 9 and chromosome 22 (Translocation)]



Amplification profile of BCR-ABL positive sample (FAM channel) along with Internal Control (ABL1) (Texas Red channel) on POC device

PML-RARA-Q Real Time PCR Kit

- PML-RARA-Q Real Time PCR Kit is a nucleic acid amplification assay for quantitative detection of PML-RARA t(15;17) translocation in human clinical samples
- Multiplex detection assay for identification & differentiation of Long (bcr1), Variant (bcr2) and Short (bcr3) fusion transcripts along with Internal Control

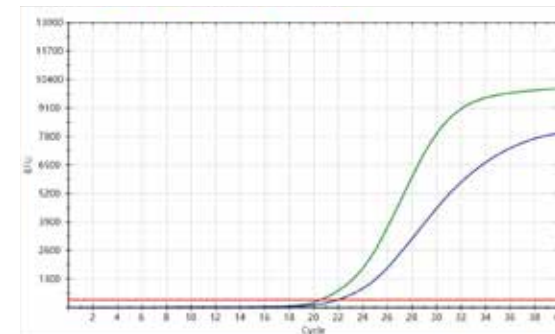


HLA B27-Q Real Time PCR Kit

- Target : B locus in the MHC on chromosome 6
- Rapid and reliable detection of HLA- B27 (FAM channel) & Internal control (Cy5 channel)

Human leukocyte antigen (HLA) B27 is majorly found in patients suffering with Ankylosing Spondylitis (AS) which is a type of arthritis that affects the spine.

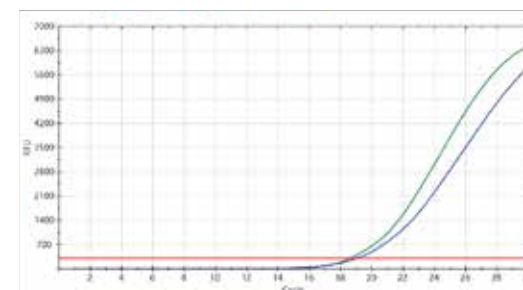
Although it can occur at any age, spondylitis most often strikes men in their teens and 20s. Traditionally "AS" has been considered a disease that affect mostly men, yet in reality, it also affects many women. People who are HLA-B27 positive are also more likely to experience early onset "AS" than HLA-B27 negative individuals.



Amplification profile of HLA B27 positive sample (FAM channel) along with Internal Control (Cy5 channel) on POC device

Jak2-Q Real Time PCR Kit

- JAK2-Q Real Time PCR Kit is an in vitro diagnostic test for the qualitative detection of mutation in JAK2 gene in DNA extracted from clinical samples
- Single tube assay, targeting sequences to detect V617F mutation i.e. Point mutation 1849 (G→T) V617F in the JAK2 gene



Amplification profile of JAK-2 positive sample (FAM channel) along with Internal Control (Cy5 channel) on POC device

Genetic Disorders Detection Solutions

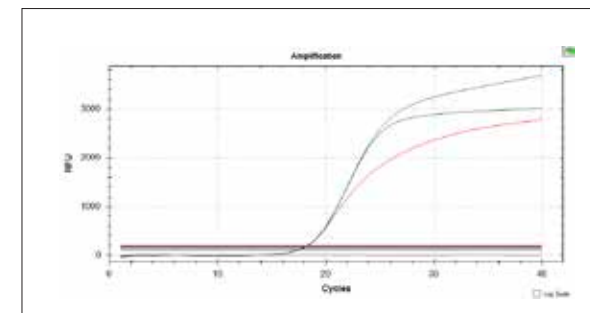
SCA-Q Real Time PCR Kit (Sickle Cell Anemia)

- SCA-Q Real Time PCR Kit is an in vitro diagnostic test for the detection of Sickle Cell Anemia mutation in human DNA extracted from clinical samples
- Intends for detection of sickle cell anemia i.e. human beta globin GAG - GTG [Glu-Val] mutation in human DNA extracted from clinical samples
- It contains reagents and enzymes for the specific amplification for the direct detection of the specific amplicon in FAM fluorescence channel

Infectious Diseases Detection Solutions

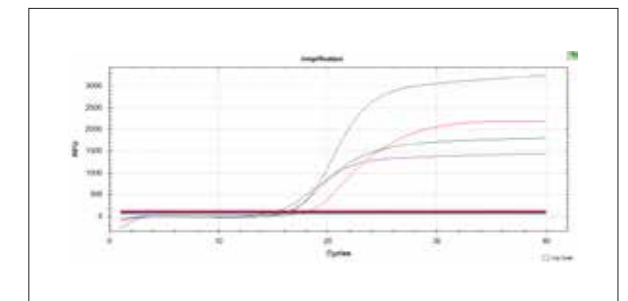
Influenza A/B-Q (H1N1 & H3N2) Real Time PCR Kit

- Multiplex kit for simultaneous detection & differentiation of Influenza A, Influenza B & Influenza A subtypes H1N1 & H3N2 virus specific RNA along with Internal control
- Gene Targets covered
 - Influenza A- Matrix protein 2 gene
 - Influenza B- Hemagglutinin (HA) gene
 - Influenza A Subtypes- H1N1 & H3N2 (HA) gene



Para2-Q Real Time PCR Kit (Tropical Diseases Fever Panel)

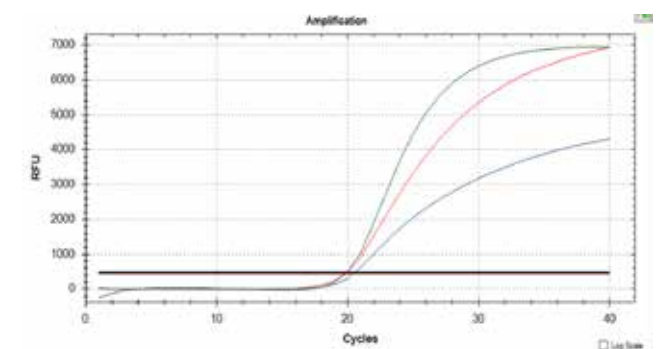
- Identification & differentiation of various vector borne transmission diseases
- Pathogens covered: Dengue, Chikungunya, Zika, Y. Fever, W. Nile & J. Encephalitis; along with parallel detection of Endogenous control
- Aids in clinical diagnosis in combination with Clinical and Epidemiological risk factors



CoVFlu One Step RT PCR Kit

CoVFlu is a unique detection kit for highly contagious respiratory diseases caused by three different viruses i.e. SARS-CoV-2, RSV and Influenza A/B. These viruses spread via similar ways (respiratory droplets/aerosols) and show common signs and symptoms of infection ranging from mild to severe.

Since, the severity of spread, illness, complications and mortality rate is much higher in COVID-19; there is a need for accurate detection of Influenza A/B, RSV & SARS-CoV-2 for effective treatment and drugs.



Infectious Diseases Detection Solutions

Sepsis-Q Real Time PCR Kit

- Syndrome commonly caused by inflammatory response of immune system as a result of bacterial, viral, protozoan or fungal infections.
- Highly comprehensive assay for detection of 19 causative organisms including:

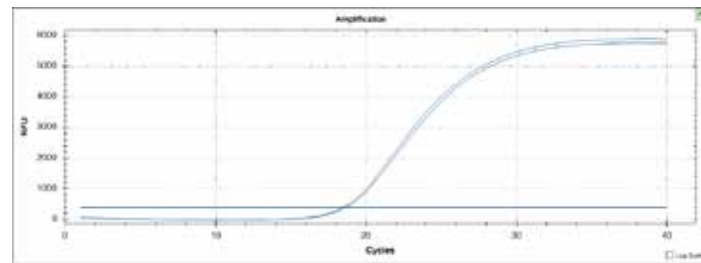
<ul style="list-style-type: none"> • Staphylococcus aureus • Staphylococcus epidermidis • Streptococcus pneumonia • Enterococcus faecalis • Enterococcus faecium 	<ul style="list-style-type: none"> • Candida tropicalis • Candida parapsilosis • Candida krusei • Pseudomonas aeruginosa • Acinetobacter baumannii • Klebsiella pneumoniae 	<ul style="list-style-type: none"> • Escherichia Coli • Salmonella enterica • Stenotrophomonas maltophilia • Enterobacter cloacae • Aspergillus fumigatus
---	--	--

UTI-Q panel Real Time PCR Kit

- Escherichia coli
- Klebsiella pneumonia
- Pseudomonas aeruginosa
- Acinetobacter baumannii
- Enterococcus faecalis
- Enterococcus faecium
- Proteus mirabilis
- Proteus vulgaris
- Candida albicans
- Staphylococcus aureus
- Streptococcus agalactiae
- Enterobacter cloacae
- Staphylococcus saprophyticus
- Morganella morganii
- Serratia marcescens
- Klebsiella oxytoca

Anti Microbial Resistance/ AMR (MDR-Q Real Time PCR Kit)

- This kit is used for in vitro qualitative detection of Klebsiella pneumoniae (KPN), Acinetobacter baumannii (Aba), Pseudomonas aeruginosa (PA) and four carbapenem resistance genes (which include KPC, NDM, OXA48 and IMP) in human sputum samples & Staphylococcus aureus and methicillin-resistant Staphylococcus aureus nucleic acids in human sputum samples, skin and soft tissue infection samples, and whole blood samples.



Amplification curve represents positive result for Carbapenem resistance gene i.e. VIM.

Broad Range of High Sensitivity Kits

Commercial Name	Cat No.	Pack Size
Oncology		
PML-RARA Real Time PCR Kit	G2M708821R	96/ 48 Tests
BCR-ABL Real Time PCR Kit	G2M708921R	96/ 48 Tests
HLA-B27-Q Real Time PCR Kit	G2M801121R	96/ 48 Tests
JAK-2-Q Real Time PCR Kit	G2M802621R	96/ 48 Tests
Mycobacterium Tuberculosis Detection		
MTC-Q Real Time PCR Kit (Tbdetect)	G2M707321R	96/ 48 Tests
TB Comprehensive Real Time PCR Kit (Tbfind)	G2M803121R	96/ 48 Tests
MTB-NTM Multiplex Real Time PCR Kit (Tbdetect Advanced)	G2M707421R	96/ 48 Tests
Respiratory Disease Diagnostics		
Influenza A/B-Q Real Time PCR Kit	G2M706021R	96/ 48 Tests
B. Pertussis-Q Real Time PCR Kit	G2M706821R	96/ 48 Tests
S. Pneumonia-Q Real Time PCR Kit	G2M706921R	96/ 48 Tests
M. Pneumonia-Q Real Time PCR Kit	G2M707721R	96/ 48 Tests
Measles-Q Real Time PCR Kit	G2M705721R	96/ 48 Tests
LP-MP Multiplex Real Time PCR Kit	G2M707921R	96/ 48 Tests
Adeno-Q Real Time PCR Kit	G2M707821R	96/ 48 Tests
MERS-Q Real Time PCR Kit	G2M802121R	96/ 48 Tests
RSV-Q Real Time PCR Kit	G2M801221R	96/ 48 Tests
COVID Detection		
COVIDtect Multiplex RT PCR Kit for COVID-19	G2M030521R	96/ 48 Tests
Rapi-Q Multiplex Real Time PCR Kit for COVID-19	G2M505121R	96/ 48 Tests
COVFlu One Step RT PCR Kit	G2M272721R	96/ 48 Tests
CoVFlu-II One Step RT PCR Kit	G2M709821R	96/ 48 Tests
Reproductive Health		
Human Papilloma Virus (HPV)-Q Real Time PCR Kit	G2M706721R	96/ 48 Tests
HPV-Q comprehensive Real Time PCR Kit	G2M803921R	96/ 48 Tests
N. Gonorrhoeae (NG)-Q Real Time PCR Kit	G2M706421R	96/ 48 Tests
T. Vaginalis (TV)-Q Real Time PCR Kit	G2M706621R	96/ 48 Tests
U. Urealyticum-Q Real Time PCR Kit	G2M801421R	96/ 48 Tests
M. Hominis (MH)-Q Real Time PCR Kit	G2M707221R	96/ 48 Tests
Syphilis-Q Real Time PCR Kit	G2M705521R	96/ 48 Tests
STI7-Q Real Time PCR Kit	G2M709121R	96/ 48 Tests
STI-Q comprehensive Real Time PCR Kit	G2M803721R	96/ 48 Tests
HSV-Q Real Time PCR Test Kit	G2M705221R	96/ 48 Tests
Toxo-Q Real Time PCR Kit*	G2M709621R	96/ 48 Tests
RCP-Q comprehensive Real Time PCR Kit	G2M803521R	96/ 48 Tests
Other Infectious Diseases		
H. Pylori-Q Real Time PCR Kit	G2M706321R	96/ 48 Tests
BK-Q Real Time PCR Kit for BK virus	G2M705421R	96/ 48 Tests
EBV-Q Real Time PCR Kit	G2M705621R	96/ 48 Tests
Nipah-Q Real Time PCR Kit	G2M705921R	96/ 48 Tests
Rota-Q Real Time PCR Kit	G2M801621R	96/ 48 Tests
VZV-Q Real Time PCR Kit	G2M705821R	96/ 48 Tests
Human Parvovirus (B19)-Q Real Time PCR Kit	G2M706521R	96/ 48 Tests
C. Albicans (CA)-Q Real Time PCR Kit	G2M708021R	96/ 48 Tests
Rubella-Q Real Time PCR Kit*	G2M804023R	96/ 48 Tests
CMV-Q Real Time PCR Kit*	G2M709521R	96/ 48 Tests
MCP-Q comprehensive Real Time PCR Kit	G2M803821R	96/ 48 Tests
GCP-Q comprehensive Real Time PCR Kit	G2M803621R	96/ 48 Tests
AMR-Q Real Time PCR Kit	G2M804027R	96/ 48 Tests
Sepsis-Q Real Time PCR Kit	G2M804026R	96/ 48 Tests
Blood Borne Diseases		
HBV-Q Real Time PCR Test Kit*	G2M709221R	96/ 48 Tests
HCV-Q Real Time PCR Test Kit*	G2M709321R	96/ 48 Tests
HIV-Q Real Time PCR Test Kit*	G2M709421R	96/ 48 Tests
3Hdteq-Q Real Time PCR Test Kit*	G2M804022R	96/ 48 Tests
Vector Borne Transmission Detection		
Dengue-Q Real Time PCR Kit	G2M705021R	96/ 48 Tests
Malaria-Q Real Time PCR Kit	G2M706221R	96/ 48 Tests
Chikungunya-Q Real Time PCR Test Kit	G2M705321R	96/ 48 Tests
Zika-Q Real Time PCR kit	G2M262621R	96/ 48 Tests
Y. Fever-Q Real Time PCR kit	G2M801821R	96/ 48 Tests
J. Encephalitis-Q Real Time PCR kit	G2M802021R	96/ 48 Tests
W. Nile-Q Real Time PCR kit	G2M802321R	96/ 48 Tests
Para-Q Multiplex Real Time PCR kit	G2M706121R	96/ 48 Tests
Para2-Q Multiplex Real Time PCR kit	G2M801521R	96/ 48 Tests
Genetic Disorders		
SCA-Q Real Time PCR Kit	G2M803221	96/ 48 Tests

Fully Automated
IVD Kits Manufacturing
Facility of 1,50,000 Sq.Ft. in
Manesar, INDIA



Genes2Me Pvt. Ltd.

1105, 11th Floor, Tower B, SAS Tower, Medicity,
Sector - 38, Gurgaon - 122 001, Haryana, India
Tel : + 91 18001 214030 / + 91 88000 23600
E-mail : contact@genes2me.com
www.genes2me.com

